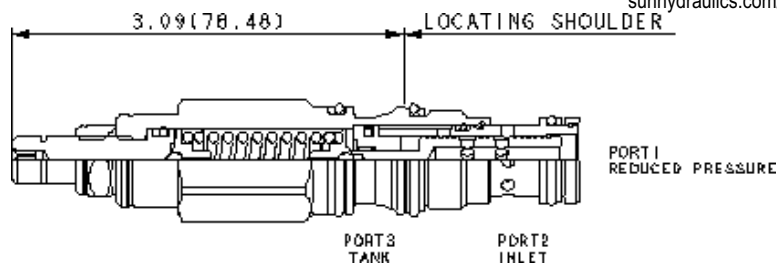
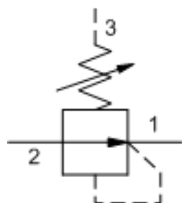




sunhydraulics.com/model/PRDR



CONFIGURATION

L	Control	Standard Screw Adjustment
B	Adjustment Range	50 - 1500 psi (3,5 - 105 bar), 200 psi (14 bar) Standard Setting
N	Seal Material	Buna-N
(none) Material/Coating		Standard Material/Coating

Direct-acting, pressure reducing valves reduce a high primary pressure at the inlet (port 2) to a constant reduced pressure at port 1. These valves incorporate a damped construction for stable operation allowing the use of high reduced pressure.

TECHNICAL DATA

NOTAR: LOS DATOS PUEDEN VARIAR SEGÚN LA CONFIGURACIÓN . CONSULTE LA SECCIÓN DE CONFIGURATION

Factory Pressure Settings Established at	0.25 gpm
Maximum Operating Pressure	350 bar
Maximum Valve Leakage at 110 SUS (24 cSt)	30 cc/min.
Adjustment - No. of CW Turns from Min. to Max. setting	5
Locknut Hex Size	15 mm
Locknut Torque	9 - 10 Nm
Seal kit - Cartridge	Buna: 990011007
Seal kit - Cartridge	EPDM: 990011014
Seal kit - Cartridge	Polyurethane: 990011002
Seal kit - Cartridge	Viton: 990011006

NOTES

For Series 1 cartridges configured with an O control (panel mount handknob), a .75 in. (19 mm) diameter hole is required in the panel.

CONFIGURATION OPTIONS

Model Code Example: PRDRLBN

CONTROL	(L)	ADJUSTMENT RANGE	(B)	SEAL MATERIAL	(N)	MATERIAL/COATING
L	Standard Screw Adjustment	B	50 - 1500 psi (3,5 - 105 bar), 200 psi (14 bar) Standard Setting	N	Buna-N	Standard Material/Coating
C	Tamper Resistant - Factory Set	E	EPDM			/AP Stainless Steel, Passivated
K	manilla	A	500 - 3000 psi (35 - 210 bar), 700 psi (50 bar) Standard Setting	V	Viton	/LH Mild Steel, Zinc-Nickel
O	Handknob with Panel Mount	D	25 - 800 psi (1,7 - 55 bar), 200 psi (14 bar) Standard Setting			
		E	25 - 400 psi (1,7 - 28 bar), 200 psi (14 bar) Standard Setting			
		S	25 - 200 psi (1,7 - 14 bar), 100 psi (7 bar) Standard Setting			
		W	750 - 4500 psi (50 - 315 bar), 1000 psi (70 bar) Standard Setting			